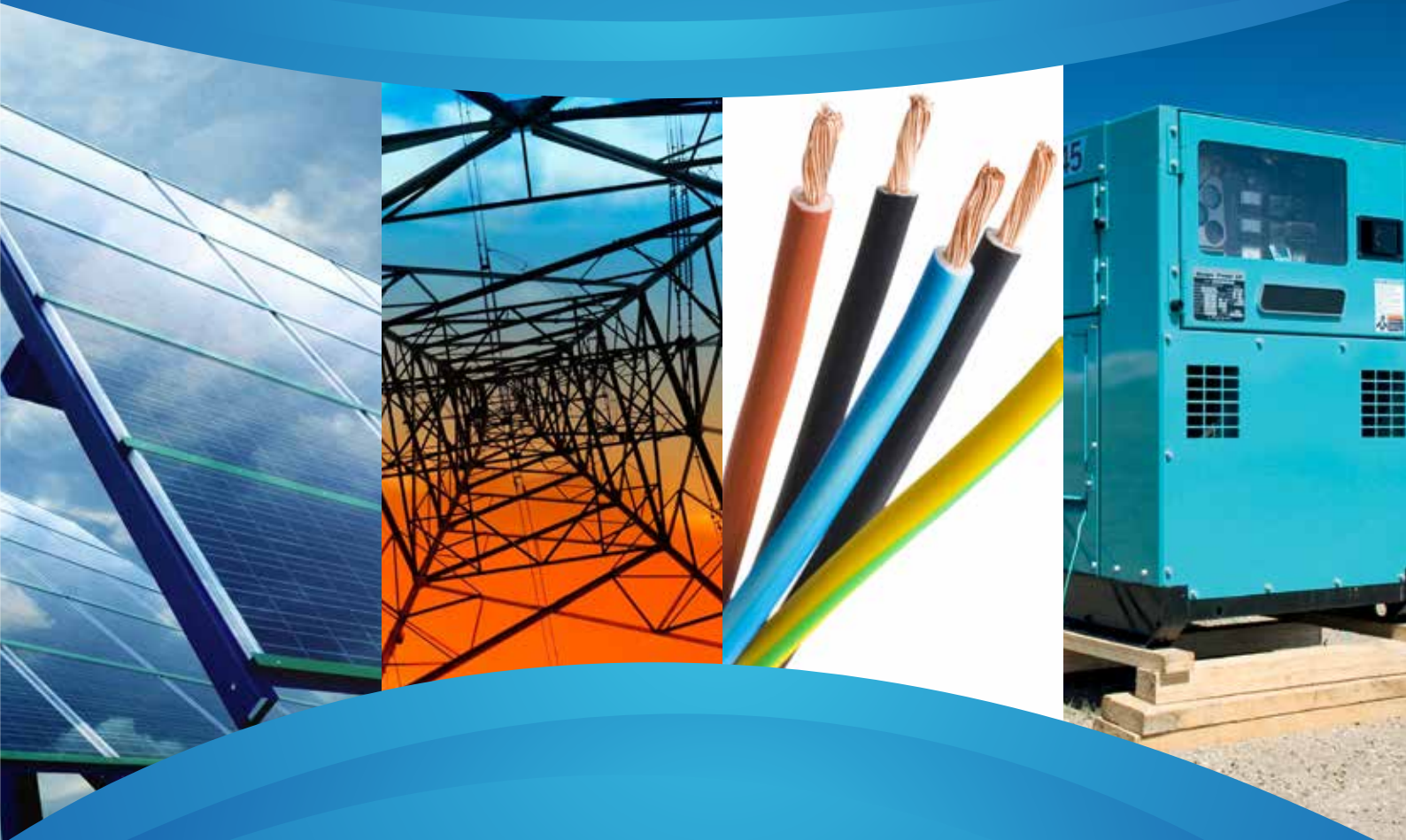


A PAMERINDO INDONESIA TRADE EVENT

ELECTRIC, POWER & RENEWABLE ENERGY INDONESIA 2017

6 - 9 September 2017



The 18th Series of Power Generation, Renewable Energy & Electrical Equipment Exhibitions



Local Organiser
Pamerindo Indonesia
International Specialised
Exhibitions

Jakarta International Expo,
Kemayoran Jakarta - Indonesia

Supported by:



Ministry of Energy
and Mineral Resources,
the Republic of Indonesia



The Indonesian
Electrical Power Society



Indonesian Electric
Cable Manufacturers'
Association



Mechanical and
Electrical Technics
Enterprises Association



The Indonesian Electrical
Lighting Industry
Association



Association of
Indonesian Electric
and Mechanical
Contractors



Association of Electrical
Industries of Indonesia

35 GIGAWATT PLAN TO MEET INDONESIA'S DEMAND FOR POWER

Indonesia has the largest economy in South East Asia (GDP USD910.74 Billion) with GDP growth rate of 5% expected until 2020. To support and sustain Indonesia's economic growth, President Jokowi announced plans to increase power production in Indonesia by 35 gigawatt (GW) in the next five years. To be able to reach this ambitious goal PT Perusahaan Listrik Negara (PLN), will construct 46,000 km of transmission lines and 103,000 MVA of electrical relay stations across 1000 locations in the country.

“ This year's EPRE has proven again to be the right platform for German companies to establish and maintain business contacts in Indonesia's strategically important electrical and energy market.

Opportunities for after-show business are considered to be either 'good' or 'excellent' by the 21 exhibitors within the German Pavilion. ”

Leonie von Samson-Himmelstjema
Customer Relationship
Manager-2VEI-German Electrical and Electronic
Manufacturers' Association

ELECTRIC INDONESIA

The state electricity company (PLN) aims to increase the electrification ratio to 98% across Indonesia from the current 83% by 2022. PLN will have to supply over 383 TWh by 2022 in order to meet projected demand over the three geographical regions of Indonesia. According to Indonesian Coal and Mining Association, coal will be the main source of energy at 65.6% of the energy mix.

POWER INDONESIA

The Ministry of Energy and Mineral Resources indicated that Indonesia needs an additional 230GW of power by 2030 which translate to 10,000 MW of extra capacity per annum. During the APEC SEO summit in Beijing, President Jokowi announced plans to boost Indonesia's electricity production and distribution to facilitate economic growth.

RENEWABLE ENERGY INDONESIA

Coal power production will still account for 60% of the 35 GW target that PLN has set for completion by 2019. This opens up vast opportunities in the Renewable Energy sector of Indonesia. The National Energy Council has proposed that renewable energy will account for 18% of the power supply by 2025 and increasing to 30% by 2050.



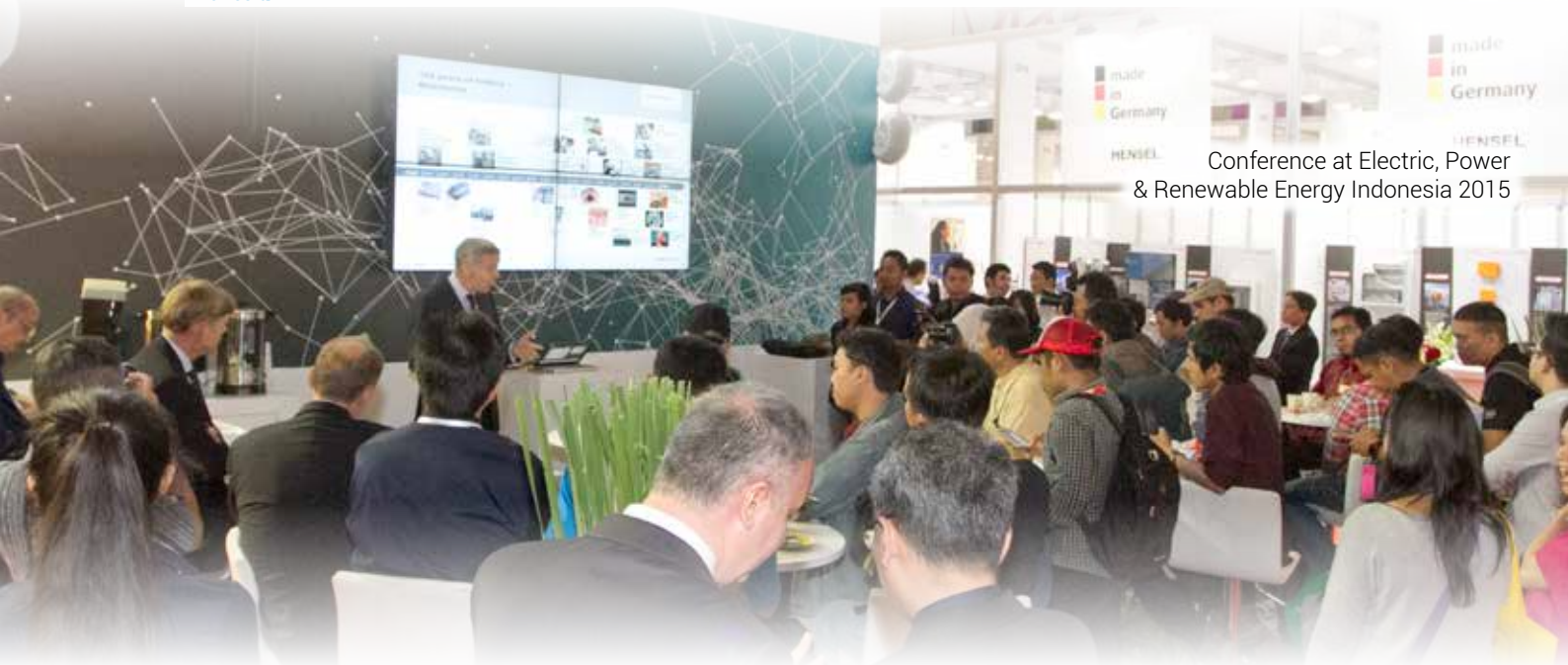
Indoor space at at Electric, Power & Renewable Energy Indonesia 2015

2015 show statistics



“ABB took pride in participating in EPRE Indonesia 2015 as one of the strategic platforms to share our latest technologies and provide a meeting point with our business partners. We are keen to return in 2017.”

Astrid Damayanti
ABB Indonesia



“Electric, Power & Renewable Energy Indonesia 2015, is a fantastic exhibition for both local and international companies to meet and connect with key industry-players. Visitors' demographic were wide and varied, giving EXTRANA CABLE opportunities to build greater brand awareness. Perfect business showcase!”

Carissa TOW,
Branding & Promotions EXTRANA CABLE

“We have participated in EPRE since the first year of our operation in Indonesia. This event is not only a platform to introduce our company and products to the public but also to build better relationships with existing customers. We hope EPRE will continue to do well in the future to gather more international crowd within South East Asia Region.”

Michael Eddy
Chint Indonesia

Jakarta International
Expo, Kemayoran Jakarta
- Indonesia



A PAMERINDO INDONESIA TRADE EVENT

ELECTRIC, POWER & RENEWABLE ENERGY INDONESIA 2017



UBM

ALLWORLD
EXHIBITIONS

For further information
please contact the office
closest to you:

JAKARTA

Wiwiek Roberto
Jakarta
T: +6221 2525 320
F: +6221 2525 482, 522 9268
E: wiwiek@pamerindo.com
www.pamerindo.com

SINGAPORE

Fiona Seetoh
Singapore
T: +65 6233 6777
F: +65 6233 6768
E: fiona@iemallworld.com

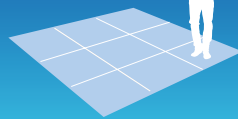
REST OF THE WORLD

Shaun White
Tel +44 (0) 20 7840 2130
Fax +44 (0) 20 7840 2119
E-mail: electric@oesallworld.com
www.allworldexhibitions.com

The Organisers

Electric, Power and Renewable Energy Indonesia is organised by P.T. Pamerindo Indonesia and marketed worldwide by UBM Allworld.

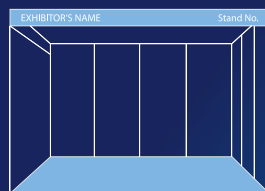
Stand Package Options



Option 1 US\$405 per sqm

Space only

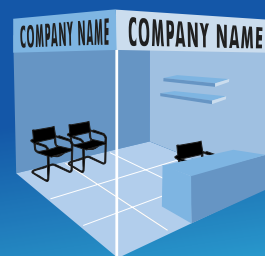
Allows you the flexibility to build your own stand (minimum 15sqm)



Option 2 US\$465 per sqm

Space with organiser's standfitting service

Including floorspace rental, stand construction, carpet, fascia, fluorescent lighting, stand carpet cleaning (minimum stand size 9sqm).



Option 3 US\$475 per sqm

Space with organiser's walk-on stand package

The organisers offer two 'walk on' stand packages – one designed for individual companies, the other designed for companies who want to exhibit as part of a large national group.

The package offers exhibitors a choice of display aids from which they can choose the most suitable items for displaying their products and services (minimum stand size 9sqm).

www.electricindonesia.com